

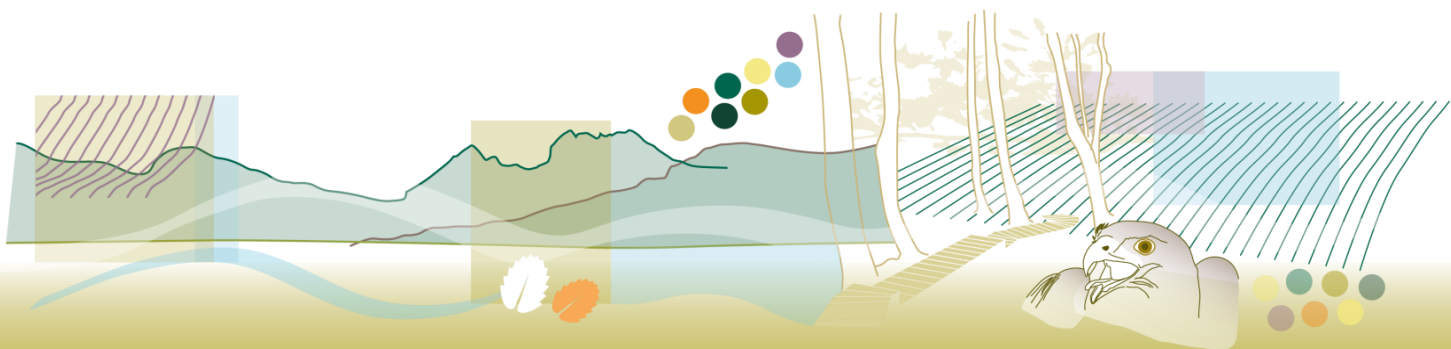


Natural Connections

Community Group Grants

2014 - 2017

Guidelines



Natural Connections Community Group Grants

Cradle Coast NRM has received funding to support delivery of a range of activities that enhance ecosystem services provided by our region through our natural landscape, coasts, waterways and people. This project is supported by Cradle Coast NRM, through funding from the Australian Government's National Landcare Programme.

Applications from Community Groups 2014 – 2017

Cradle Coast NRM is calling for applications from community groups in North West Tasmania to apply for Natural Connections Community Group Grants. Applications need to contribute to Cradle Coast NRM's Natural Connections outcomes.

How much funding is available?

Natural Connections Community Group Grants funding levels (excluding GST) to eligible applicants are:

Level 1: \$500 to \$2,000 for eligible projects.

Level 2: \$2,000 to \$5,000 for projects that have high level of environmental outcomes and that will be completed within 10 months.

Please note all projects must be completed by December 2017.

Eligibility

- Community groups (ie Landcare, Coastcare, Friends of and Aboriginal groups) working on projects that benefit the environment in the Cradle Coast region* are eligible to apply.
- Community Groups that register with Cradle Coast NRM and complete a Community Group Health survey.
- Project applications must be submitted by set dates.
- Groups are eligible to apply for more than one project. Acquittal of previous projects is required, unless previously arranged with Cradle Coast NRM.

**The Cradle Coast region includes the Council areas of Burnie City, Central Coast, Circular Head, Devonport City, Kentish, King Island, Latrobe, Waratah-Wynyard and West Coast.*

What can be funded?

Under *Natural Connections*, Cradle Coast NRM will consider funding for activities that contribute to the following outcomes:

- a) Protect and enhance vegetation, waterways, riparian buffers, native species and reduce weeds through targeted on-ground works.
- b) Increase knowledge and skills in conservation, protection and maintenance of natural assets.
- c) Increase regional capacity building and participation in natural resource management and community monitoring.

Examples of activities that will be considered:

- Activities that contribute to conserving and protecting flora, fauna and habitat and improved management of coastal reserves, conservation areas, and waterways through revegetation, natural regeneration and/or defining beach access points .*
- Interpretative signage that promotes conservation, natural values and rare and threatened species in reserves and conservation areas.*
- Activities that increase skills and knowledge in Landcare community groups and increase participation.*
- Activities that increase NRM skills, knowledge in the wider community and increase awareness of our natural resources.*
- Activities to conserve and protect threatened species listed under the Environment Protection and Biodiversity Conservation Act 1999 (EPBC Act) and State listed species and vegetation communities.*

On-ground works project conditions to consider:

Land Manager permission

Ensure the Land Manager (Council, Parks and Wildlife Service or Crown Land Services) has provided your group with permission to undertake the project and all necessary planning, regulatory and other approvals, permits and permissions are obtained (e.g. cultural heritage assessments). Ensure the Land Manager has signed the application.

Management of revegetation at project site

Activities including revegetation works should improve environmental outcomes by enhancing or halting the decline in health of remnant vegetation, improving habitat values and/or improving health of waterways.

Monitoring activities

Unless otherwise agreed with Cradle Coast NRM, access to project sites is to be provided to Cradle Coast NRM for the term of the project to enable GPS mapping of any agreed on-ground works. Access is to be provided to Cradle Coast NRM for ongoing monitoring purposes, including photo point monitoring, for up to 3 years after project completion.

What are ineligible activities?

The following activities will not be supported:

- Projects outside the Cradle Coast region
- Purchase of non-native plant species
- Purchases of major equipment, such as computers, printers, software, machinery and power tools
- Waterway engineering plans and works
- Cost of public liability insurance
- Employment costs for community group volunteers and coordinators
- Capital works and infrastructure such as the construction of rock walls, car parks, green houses and sheds
- Purchase of chemicals or herbicides for weed control
- Retrospective payments for already completed works
- Volunteer travel costs (eg fuel re-imbursments). Travel and accommodation expenses for visiting specialists are eligible if it is considered an essential project component).

How will applications be assessed?

Applications will be assessed by an internal Cradle Coast NRM assessment panel based on information provided in completed Application Forms.

Criteria projects will be assessed against are:

- Meeting program objectives.
- Level of community engagement.
- Conservation outcomes.
- Project methodology and capacity of the community group to successfully deliver the project on time.
- Value for money – we look more favourably on a 1-1 in-kind or cash contribution.

Site assessments:

A site visit to proposed project site is usually preferred. We encourage discussions between the community group and land manager to discuss the project proposal. Technical advice may be required to ensure the project methodology is best practice and observes relevant legislation.



Application process and key dates

Submitting a Project Proposal

A *Natural Connections Community Group application* must be developed in conjunction with Cradle Coast staff. Please contact Cradle Coast NRM to arrange a meeting with a Cradle Coast NRM Coordinator or Project Officer and receive an application form.

Once completed proposals are to be sent via email or post to:

Natural Connections applications
Cradle Coast NRM
PO Box 338
BURNIE TAS 7320
awind@cradlecoast.com

Applications need to be submitted before the following closing date:

28 February 2017

Application notification

Successful applicants will be notified by email or post. Relevant documents will then be forwarded outlining terms and conditions prior to commencement of works. Unsuccessful applicants will be notified by email or post.

Cradle Coast NRM reserves the right to make the final decision on granting project funds and/or adjust budgets.

For more information on the *Natural Connections Project Proposals* please contact:

Anna Wind
Coastal Coordinator
Cradle Coast NRM
Phone: 6433 8423
Mobile: 0429 804 449
Email: awind@cradlecoast.com